

# \$766,740 - 4503 10360 102, Edmonton

MLS® #E4457343

## \$766,740

2 Bedroom, 2.00 Bathroom, 1,007 sqft  
Condo / Townhouse on 0.00 Acres

Downtown (Edmonton), Edmonton, AB

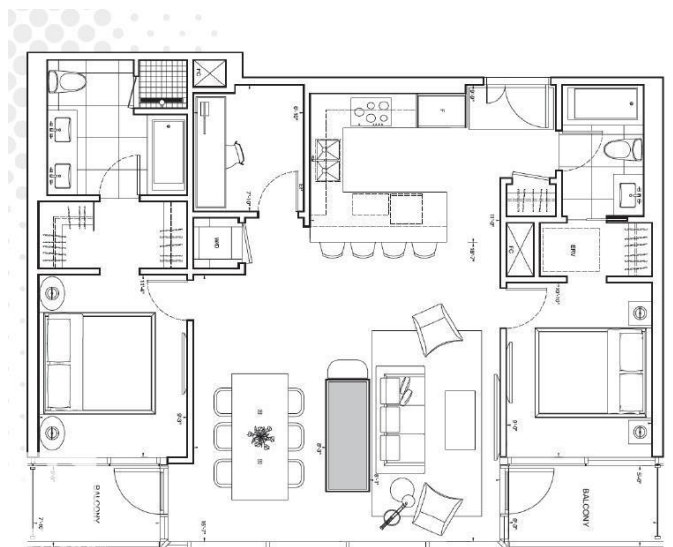
Spacious 2 BEDROOM+DEN, available at the Legends Private Residences! Appreciate beautiful RIVER VALLEY VIEWS from this high-floor East exposure, which clears Edmonton Tower. Favorite features include: High-Gloss Kitchen with Full-Size Integrated Appliances (gas), King-Size Primary Suite with Luxury Ensuite (walk-in shower + tub), roomy Interior Den/or Walk-In Pantry. Modern Luxuries include: Floor-to-Ceiling Windows, Tile Surfaces in Baths, Convenient In-Suite Laundry, and Individual Temperate Control (heat/ac). There's More - ICE District's central location encourages a walk-indoors experience with pedway access to Rogers Place, the financial core, groceries, public transit + so much more. Residents enjoy a variety of JW Marriott's shared facilities, including an indoor pool, steam room and ARCHETYPE Fitness Facility. Additional services include 24/7 concierge/security presence, private resident lounge, outdoor dog-run and numerous dining choices at your doorstep!

Built in 2019

## Essential Information

MLS® # E4457343

Price \$766,740



Bedrooms	2
Bathrooms	2.00
Full Baths	2
Square Footage	1,007
Acres	0.00
Year Built	2019
Type	Condo / Townhouse
Sub-Type	Apartment High Rise
Style	Single Level Apartment
Status	Active

### **Community Information**

Address	4503 10360 102
Area	Edmonton
Subdivision	Downtown (Edmonton)
City	Edmonton
County	ALBERTA
Province	AB
Postal Code	T5J 0K6

### **Amenities**

Amenities	Air Conditioner, Exercise Room, Parking-Visitor, Party Room, Sauna; Swirlpool; Steam, Secured Parking, Concierge Service
Parking Spaces	1
Parking	Underground

### **Interior**

Interior Features	ensuite bathroom
Appliances	Dishwasher-Built-In, Hood Fan, Oven-Built-In, Oven-Microwave, Refrigerator, Stacked Washer/Dryer, Stove-Countertop Gas, Window Coverings, Wine/Beverage Cooler
Heating	Fan Coil, Natural Gas
# of Stories	54
Stories	1
Has Basement	Yes
Basement	None, No Basement

### **Exterior**

Exterior	Concrete, Metal
----------	-----------------

Exterior Features	River View, Shopping Nearby, View City, View Downtown
Roof	EPDM Membrane
Construction	Concrete, Metal
Foundation	Concrete Perimeter

### **Additional Information**

Date Listed	September 11th, 2025
Days on Market	39
Zoning	Zone 12
Condo Fee	\$1,281

DATA IS DEEMED RELIABLE BUT IS NOT GUARANTEED ACCURATE BY THE REALTORS® ASSOCIATION OF EDMONTON. COPYRIGHT 2025 BY THE REALTORS® ASSOCIATION OF EDMONTON. ALL RIGHTS RESERVED. Trademarks are owned or controlled by the Canadian Real Estate Association (CREA) and identify real estate professionals who are members of CREA (REALTOR®, REALTORS®) and/or the quality of services they provide (MLS®, Multiple Listing Service®)

Listing information last updated on October 20th, 2025 at 6:17pm MDT