

## \$579,000 - 13824 110a Avenue, Edmonton

MLS® #E4454302

**\$579,000**

5 Bedroom, 3.00 Bathroom, 1,795 sqft

Single Family on 0.00 Acres

North Glenora, Edmonton, AB

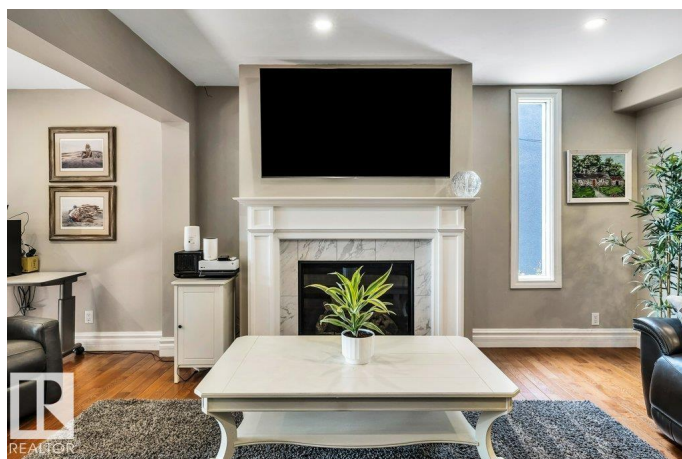
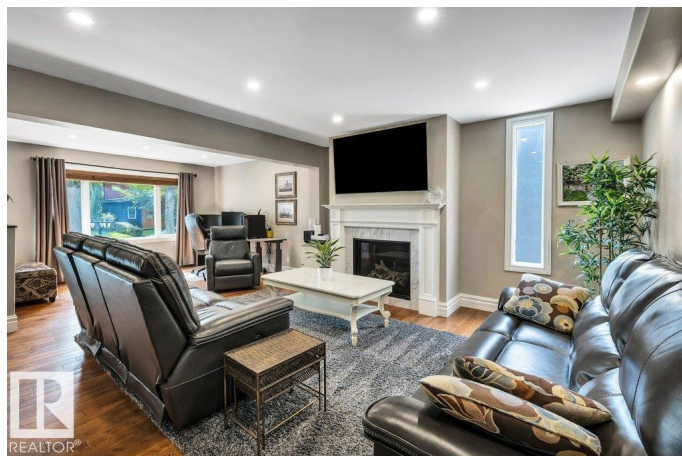
**GREAT VALUE!** Beautifully renovated 1.5 storey home offering 1,795 sq. ft. of modern living space on a 50 ft lot in the highly sought-after, tree-lined community of North Glenora. This bright and inviting home features a spacious living room with a cozy gas fireplace, gleaming hardwood floors, and a versatile office area. The open-concept kitchen and dining area boast an abundance of cabinetry, a large island with seating, granite countertops, newer appliances, and a sink with a backyard view. From here, step onto the large deck—ideal for entertaining. The main floor includes a generous primary bedroom with excellent closet space and a full bathroom. Upstairs, youâ€™ll find two additional bedrooms and a 3-pc bathroom. The fully finished basement adds even more living space with a second kitchen, bedrooms 4 and 5, a third bathroom, gym area, and laundry. Upgrades include kitchens, windows, electrical, roof, hot water tank. Note the large deck, dog run/RV storage, o/s detached garage with gas connection.

Built in 1952

### Essential Information

MLS® # E4454302

Price \$579,000



Bedrooms	5
Bathrooms	3.00
Full Baths	3
Square Footage	1,795
Acres	0.00
Year Built	1952
Type	Single Family
Sub-Type	Detached Single Family
Style	1 and Half Storey
Status	Active

### Community Information

Address	13824 110a Avenue
Area	Edmonton
Subdivision	North Glenora
City	Edmonton
County	ALBERTA
Province	AB
Postal Code	T5M 2M9

### Amenities

Amenities	Off Street Parking, On Street Parking, Closet Organizers, Deck, Dog Run-Fenced In, Exercise Room, Fire Pit, Gazebo, Guest Suite, R.V. Storage, Tennis Courts, Vinyl Windows, Vacuum System-Roughed-In, Infill Property, Barrier Free Home, Natural Gas BBQ Hookup, Natural Gas Stove Hookup
Parking Spaces	4
Parking	Double Garage Detached, Front/Rear Drive Access, Over Sized, Parking Pad Cement/Paved, RV Parking, Shop

### Interior

Appliances	Dishwasher-Built-In, Dryer, Fan-Ceiling, Microwave Hood Fan, Oven-Built-In, Oven-Microwave, Stove-Countertop Gas, Stove-Electric, Washer, Window Coverings, See Remarks, Refrigerators-Two, TV Wall Mount
Heating	Forced Air-1, Natural Gas
Fireplace	Yes
Fireplaces	Mantel
Stories	3
Has Suite	Yes

Has Basement	Yes
Basement	Full, Finished

## Exterior

Exterior	Wood, Vinyl
Exterior Features	Back Lane, Fenced, Flat Site, Fruit Trees/Shrubs, Golf Nearby, Low Maintenance Landscape, Playground Nearby, Public Swimming Pool, Public Transportation, Recreation Use, Schools, Shopping Nearby, Ski Hill Nearby, Subdividable Lot
Lot Description	Rectangle
Roof	Asphalt Shingles
Construction	Wood, Vinyl
Foundation	Concrete Perimeter

## School Information

Elementary	Coronation/ St. Vincent
Middle	Westminster/Westmount
High	Ross Shep

## Additional Information

Date Listed	August 22nd, 2025
Days on Market	12
Zoning	Zone 07

DATA IS DEEMED RELIABLE BUT IS NOT GUARANTEED ACCURATE BY THE REALTORS® ASSOCIATION OF EDMONTON. COPYRIGHT 2025 BY THE REALTORS® ASSOCIATION OF EDMONTON. ALL RIGHTS RESERVED. Trademarks are owned or controlled by the Canadian Real Estate Association (CREA) and identify real estate professionals who are members of CREA (REALTOR®, REALTORS®) and/or the quality of services they provide (MLS®, Multiple Listing Service®)

Listing information last updated on September 3rd, 2025 at 6:32pm MDT