

## \$229,900 - 227 5515 7 Avenue, Edmonton

MLS® #E4449188

**\$229,900**

2 Bedroom, 2.00 Bathroom, 746 sqft  
Condo / Townhouse on 0.00 Acres

Charlesworth, Edmonton, AB

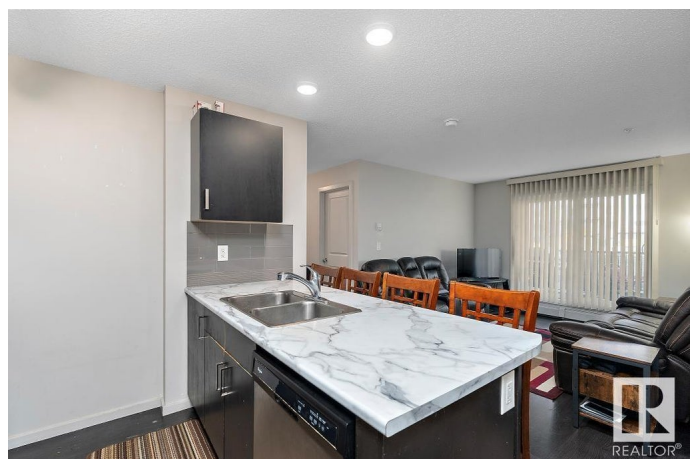
Welcome to this bright and spacious 2 bedroom, 2 bathroom second floor unit with 1 titled underground parking stall, located in a well maintained building in one of Edmonton's most sought after communities. With an open concept layout, this unit features a large kitchen with ample cabinetry, a dedicated office nook, and in-suite laundry perfect for working professionals, young families, or savvy investors. Step outside to your private balcony, ideal for morning coffee or evening relaxation. The two generous bedrooms are thoughtfully separated for privacy, with the primary suite featuring a walk-through closet and full ensuite. Enjoy peace of mind with LOW condo fees that INCLUDE heat and water, making this an affordable and smart ownership opportunity. Conveniently located close to shopping, schools, parks, and public transit, this home offers unbeatable value and lifestyle. Whether you're a first time buyer or looking to add a solid investment to your portfolio, this unit is a must see!

Built in 2014

### Essential Information

MLS® # E4449188

Price \$229,900



Bedrooms	2
Bathrooms	2.00
Full Baths	2
Square Footage	746
Acres	0.00
Year Built	2014
Type	Condo / Townhouse
Sub-Type	Lowrise Apartment
Style	Single Level Apartment
Status	Active

### **Community Information**

Address	227 5515 7 Avenue
Area	Edmonton
Subdivision	Charlesworth
City	Edmonton
County	ALBERTA
Province	AB
Postal Code	T6X 2A8

### **Amenities**

Amenities	On Street Parking, Parking-Visitor, Patio, Security Door
Parking	Underground

### **Interior**

Interior Features	ensuite bathroom
Appliances	Dishwasher-Built-In, Refrigerator, Stacked Washer/Dryer, Stove-Electric
Heating	Baseboard, See Remarks
# of Stories	4
Stories	1
Has Basement	Yes
Basement	None, No Basement

### **Exterior**

Exterior	Wood, Vinyl
Exterior Features	Public Transportation, Schools, Shopping Nearby
Roof	Asphalt Shingles
Construction	Wood, Vinyl
Foundation	Concrete Perimeter

## Additional Information

Date Listed	July 23rd, 2025
Days on Market	66
Zoning	Zone 53
Condo Fee	\$422

DATA IS DEEMED RELIABLE BUT IS NOT GUARANTEED ACCURATE BY THE REALTORS® ASSOCIATION OF EDMONTON. COPYRIGHT 2025 BY THE REALTORS® ASSOCIATION OF EDMONTON. ALL RIGHTS RESERVED. Trademarks are owned or controlled by the Canadian Real Estate Association (CREA) and identify real estate professionals who are members of CREA (REALTOR®, REALTORS®) and/or the quality of services they provide (MLS®, Multiple Listing Service®)

Listing information last updated on September 27th, 2025 at 9:17am MDT